

Using Data to make (good) decisions

Kathryn Sharples

Director, Publishing Development

Using to data to make....

- Portfolio Planning
- Editorial and Journal programme development

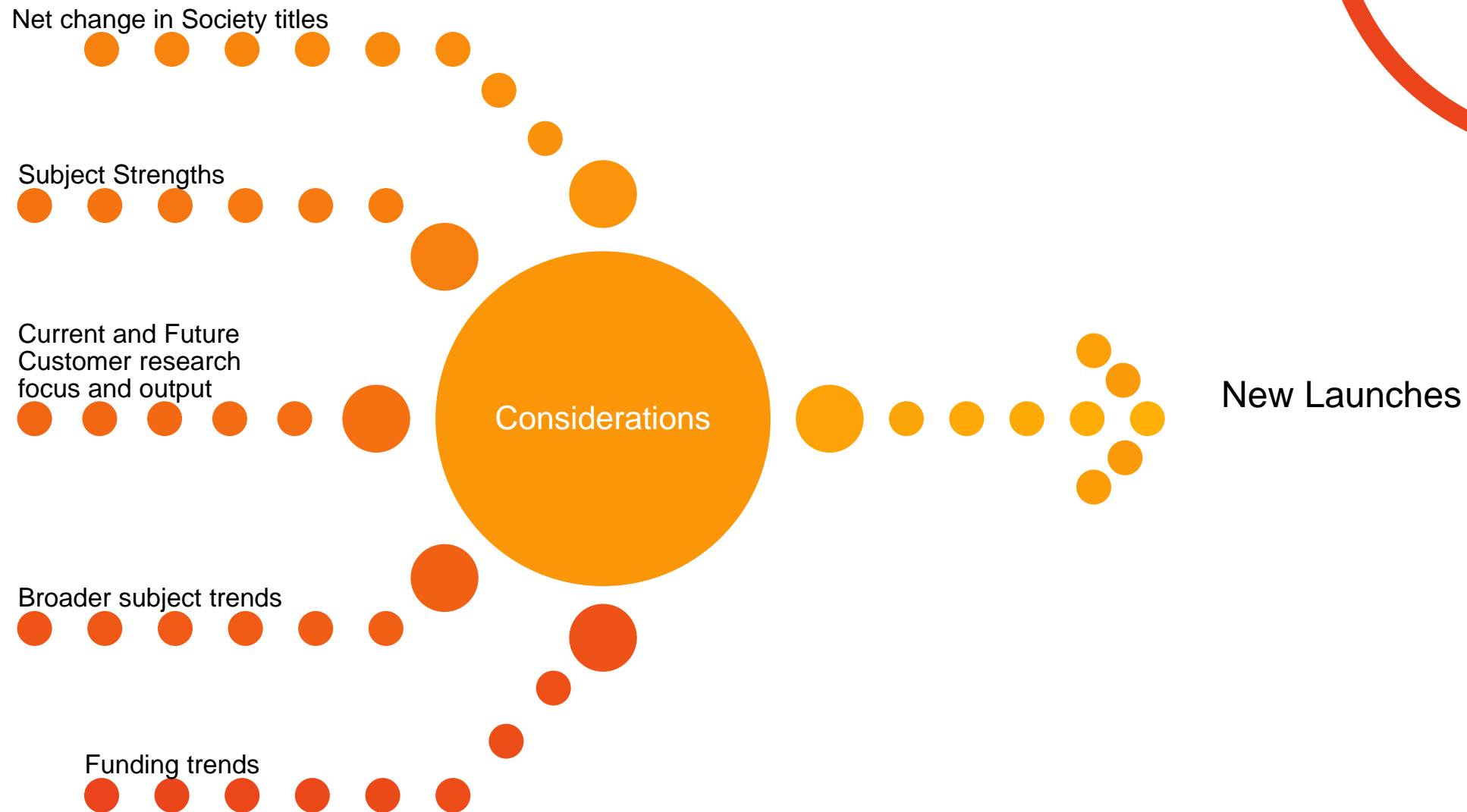
Portfolio Planning and Development





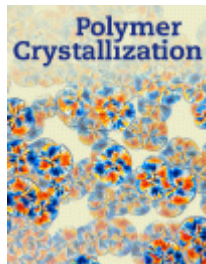
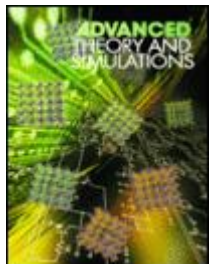


Photo credit: Thammanoon Khamchalee/Shutterstock

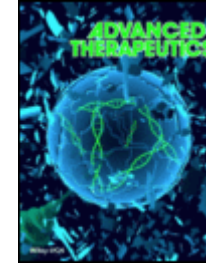


New Launches

Materials Science



Medicine



EEE and Information Systems

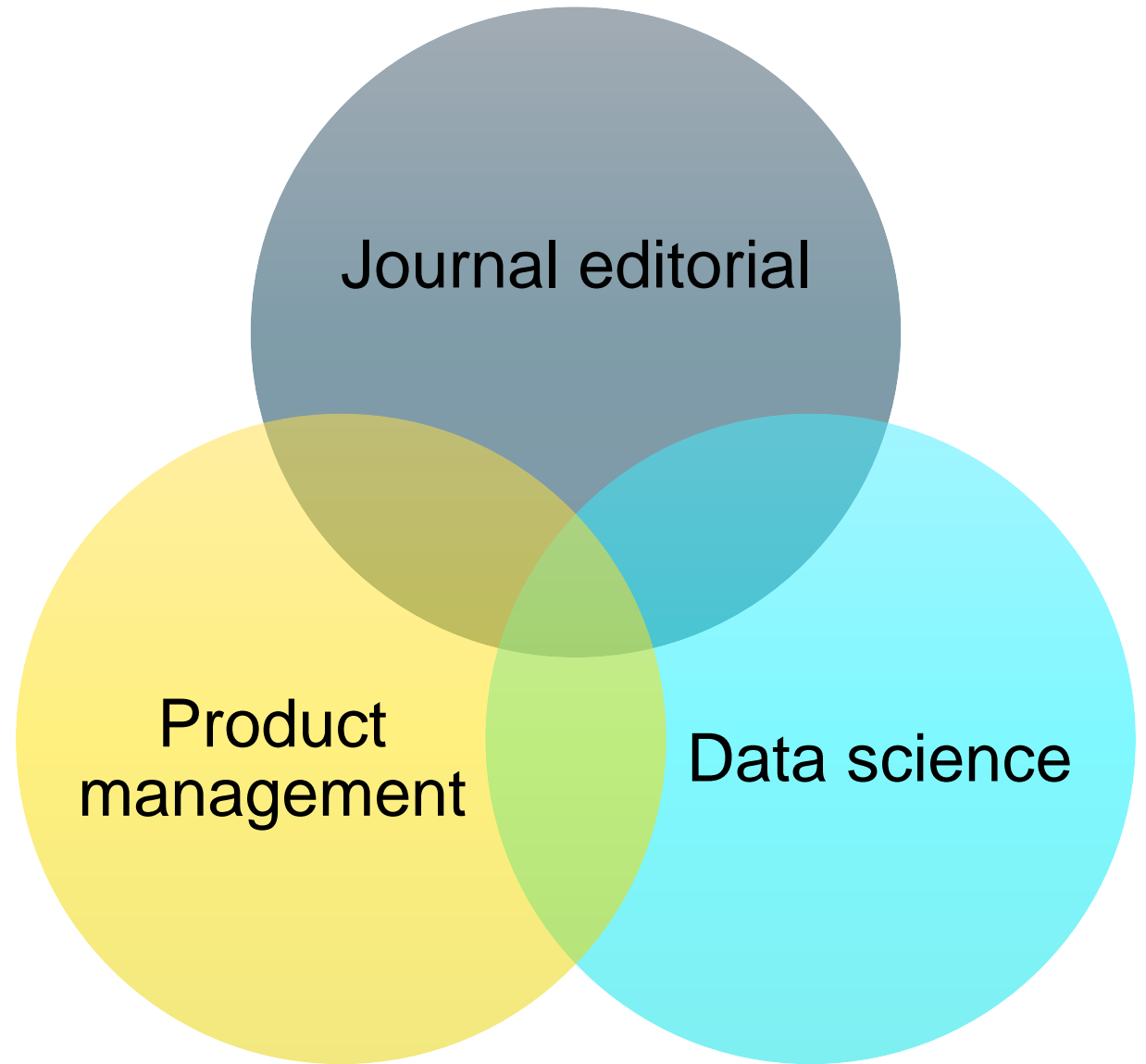


Traditional Sciences



Product Management & Development

Intelligent Solutions

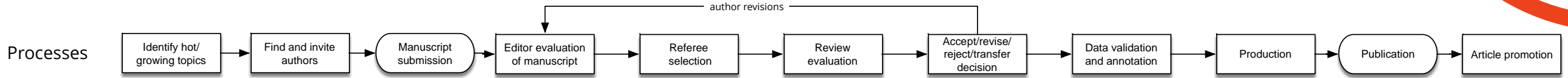


Machine learning can be used to inform journal editorial decisions and journal program development.

Machine re-engineering journal editorial and journal program management to:

- Increase the number of topics and papers we publish
- Increase productivity and efficiency
- Make better decisions more consistently

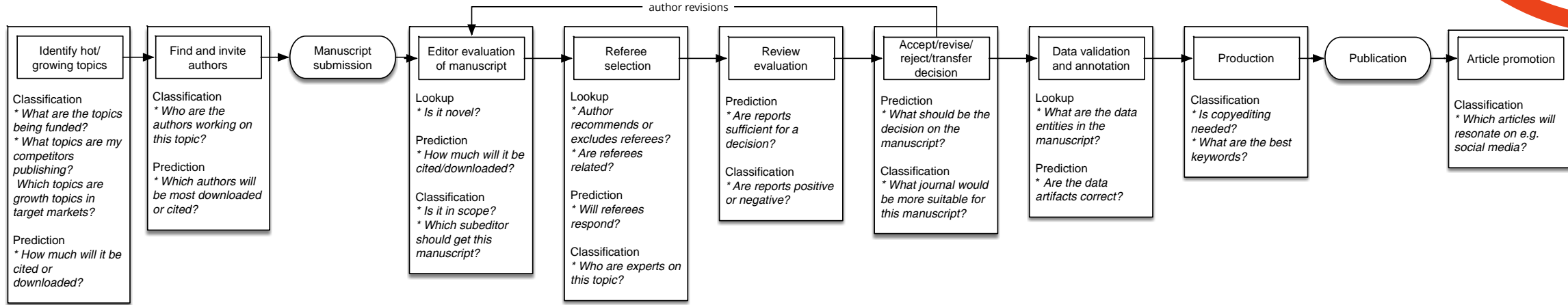
Journal editorial workflow



Journal editorial workflow

Processes

Machine learning



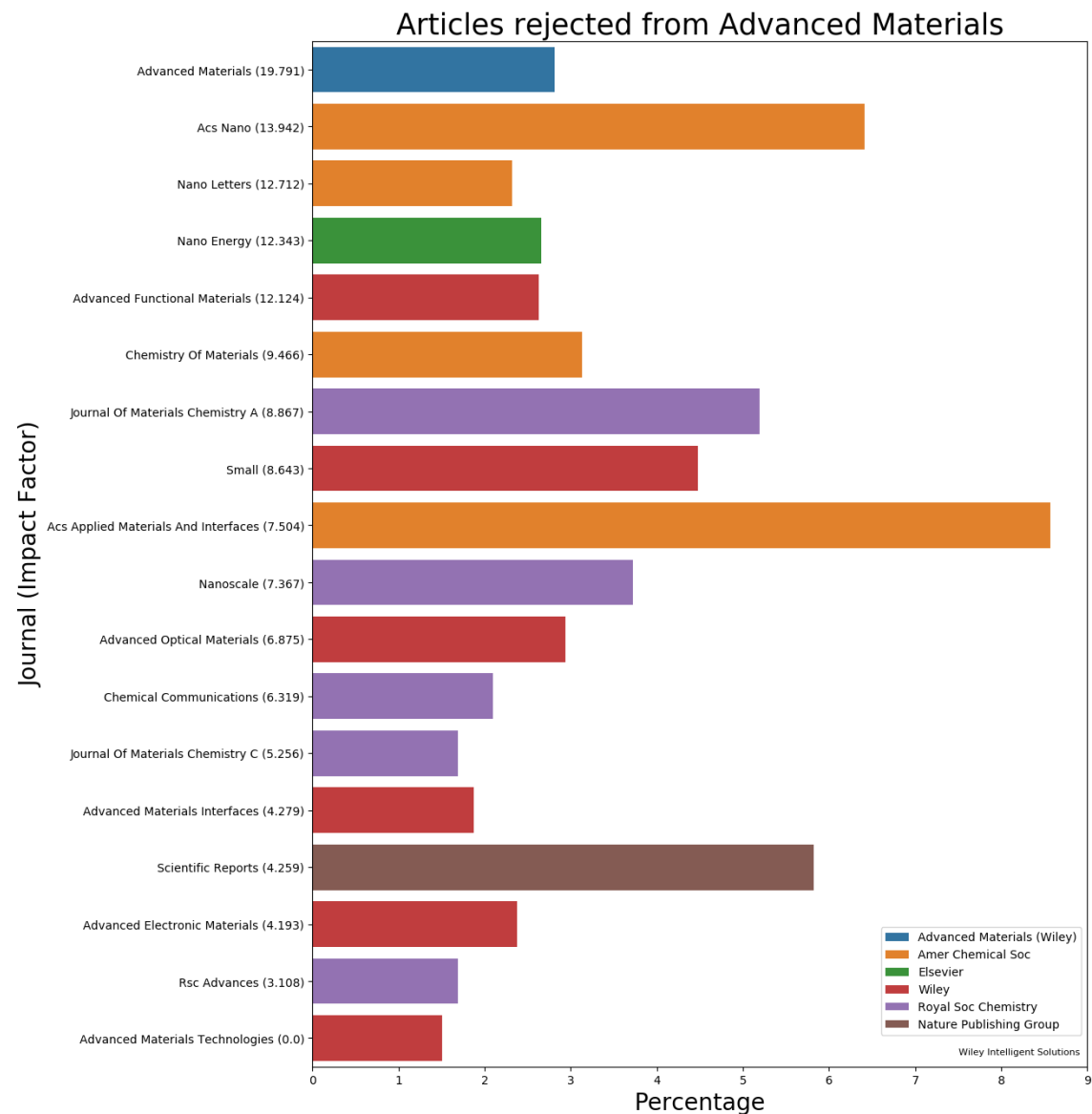
Examples

Examples

Rejected paper tracker

Where do papers go when we reject them?

- A PhD editor can spend three afternoons Googling to manually find 160 manuscripts.
- Application matches thousands of papers in minutes.



Expert finder

Finding the best authors, reviewers, and board members.

Manual search tools are far from comprehensive and only as good as the person conducting the search

Application finds hundreds of experts in any topics without the user needing specialist expertise.



Journal Finder

How do authors and editors find the most suitable journal for a paper?

- Editor/author experience has been the primary tool until now.
- Application picks the correct journal (from Wiley's 1500+) as the *first* choice > 50% of the time based *only on the title of a manuscript*.



“We'll be able to have a discussion grounded in data rather than assumptions.”

Thank you

Ksharples@wiley.com