

A researcher's perspective:

The value of web-based collaboration platforms.

David Reese McKay

H.E.B. Grocery

Yale University

Olin Neuropsychiatry Research Center

University of Texas Health Science Center of San Antonio

22 April 2015

No financial conflicts of interest

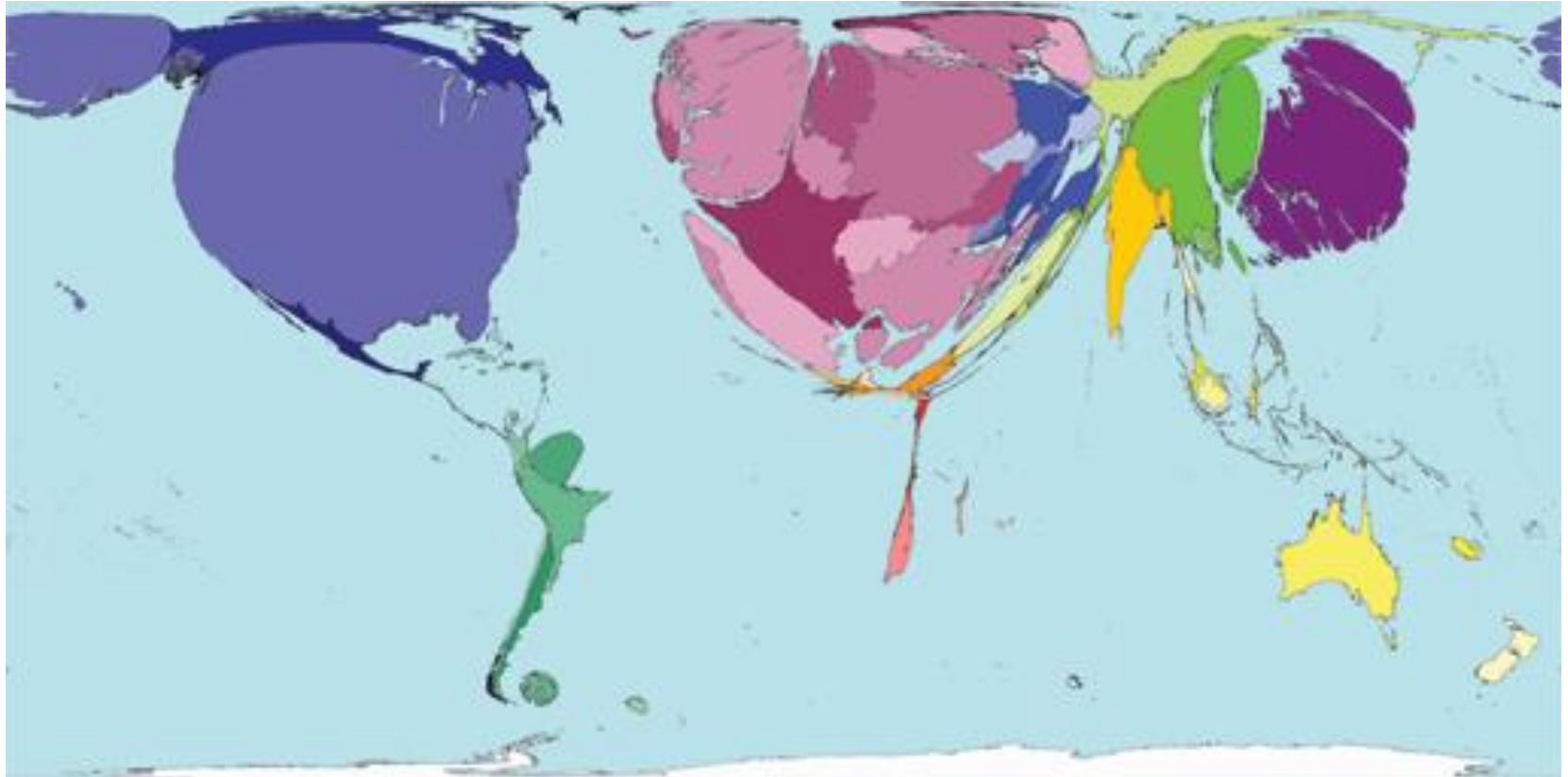
GOBS: Genetics of Brain Structure and Function Project

- Mexican-Americans from San Antonio.
- 2100 individuals in 45 families.
- ~60% female; Age range: 18-91
- Originally recruited in 1991 to investigate genetic determinants of cardiovascular disease
- 60-fold coverage whole genome sequence data

- 1500 individuals:
 - Structural MRI
 - Resting State MRI
 - DTI
 - Neurocognitive testing



Who's publishing?



Female
38 %



Male
62 %



Top 15 heaviest coffee drinkers

1	Scientist/Lab Technician
2	Marketing/PR Professional
3	Education Administrator
4	Editor/Writer
5	Healthcare Administrator
6	Physician
7	Food Preparer
8	Professor
9	Social Worker
10	Financial Professional
11	Personal Caretaker
12	Human Resources Benefits Coordinator
13	Nurse
14	Government Professional

4,700 Americans polled by Dunkin Donuts and CareerBuilder
"Some professionals need coffee more than others"

How do researchers stay employed?

Publications

Frequency, Impact Factor, Journal, Author List

Product Development

Research Analysis

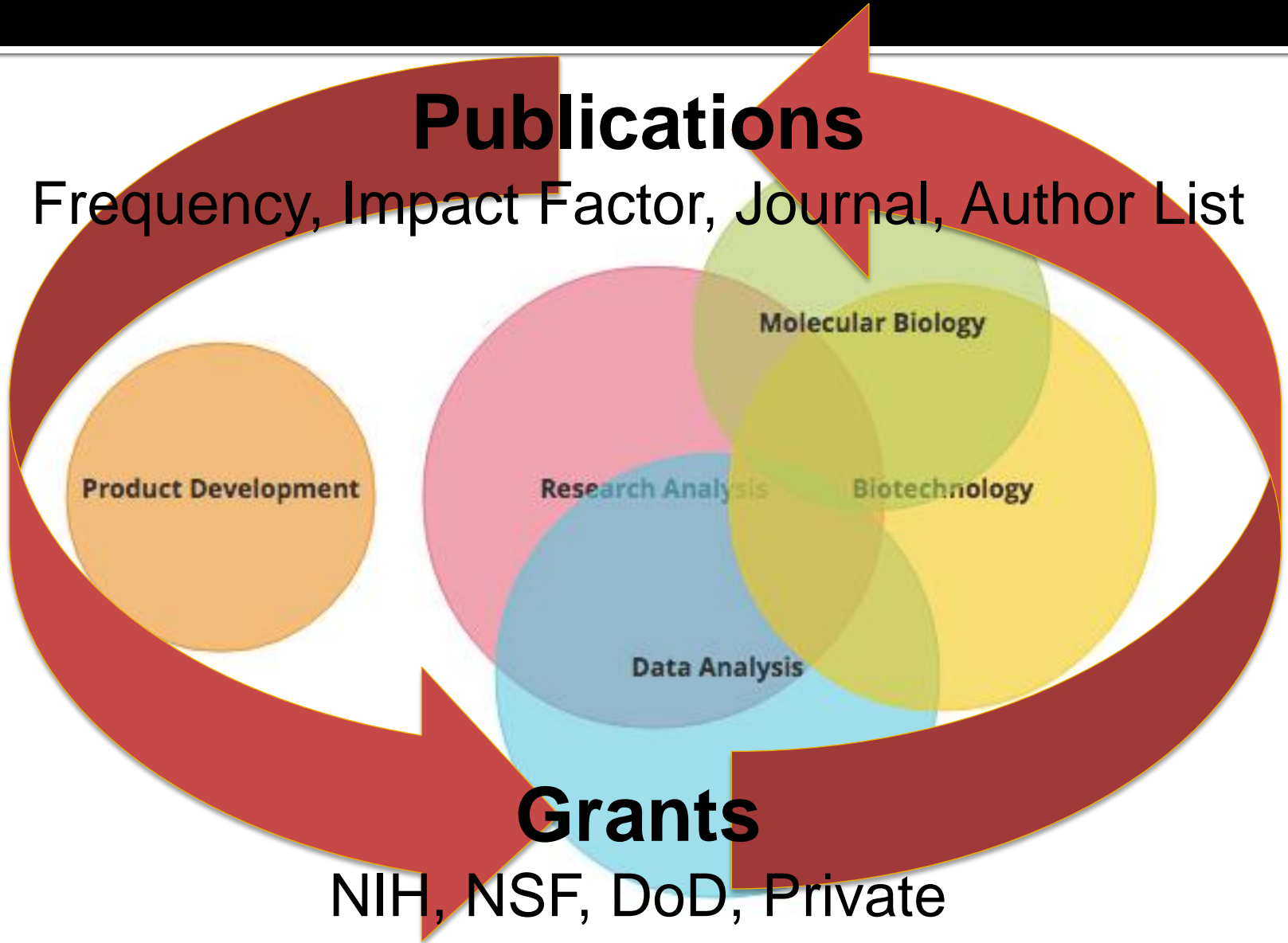
Molecular Biology

Biotechnology

Data Analysis

Grants

NIH, NSF, DoD, Private



Scholarly Collaboration Networks

ResearchGate

ResearchGate

Web address	http://researchgate.net/ 
Type of site	Social network service for scientists
Users	6 million ^[1]
Owner	ResearchGate
Created by	Ijad Madisch, Sören Hofmayer, Horst Fickenscher
Launched	May 2008
Alexa rank	1.438 ^[2]

academia.edu

Type	Private
Headquarters	San Francisco, California
Area served	Worldwide
Founder(s)	Richard Price
Employees	19 ^[1]
Website	academia.edu 
Alexa rank	829 ^[2]
Type of site	Platform for sharing research papers
Registration	Free
Available in	English
Launched	September 2008
Current status	Active

Reviews, briefly...



ResearchGate:

- **Interactivity:** Collaboration and discovery through its Q & A forums.
- **Scoring:** Metrics based on uploaded publications and answered questions.
- **Scoring:** Metric based on uploaded publications and answered questions.
- "Admins are very aware of all that is posted in the network, manipulating content, as if we were small children."
- Self-perpetuating record-keeping process

Academia.edu:

- **Repository of publications:** Allows link posting where other researchers download from original source. Were slow to incorporate co-authorship.
- **Upload work in progress:** 'Sessions' for open review (new)
- **Restrictive interaction:** "Academia.edu has deleted many of my discussions, eventually closing my profile. This gave me the creepy feeling of censorship and being big brothered with the excuse of policing spam."

Smaller/Different Players: mendeley.com, myscientificnetwork.com, pubcrawler.com

Uninvited Elephants: fb, linkedin, google

ResearchGate Profile Page

ResearchGate

Home Q&A Publications Jobs

David Reese Mckay

PhD

Postdoctoral Associate

Yale University School of Medi... · Psychiatry

30.15

OVERVIEW CONTRIBUTIONS INFO STATS RG SCORE

Add your publications

Add unpublished work

Show your career's best

Use your profile overview page to present yourself and your research. Customizing your profile is the best way to show your peers what you've been working on, create exposure for your current projects, and start building your network.

Yale University
Psychiatry
CT, United States

Add your experience

Have you worked at **Neuropsychiatric Research Institute?**

Don't add Add to profile

34	4k	2,050	318	170.64
PUBLICATIONS	Views	Downloads	Citations	Impact Points

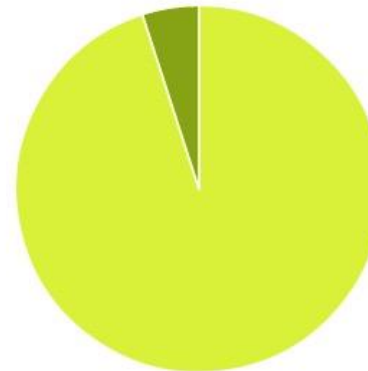
View stats

30.15

RG Score

A new way to measure scientific reputation.

The RG Score takes **all** your research and turns it into a source of reputation.

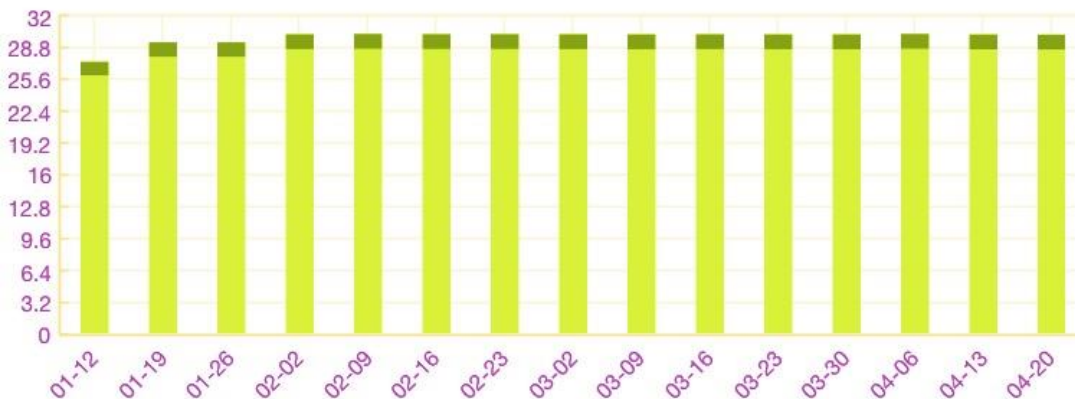


PERCENTILE

Your score is higher than 87.5% of ResearchGate members'.



RG SCORE OVER TIME



How does the RG Score work?

Your RG Score is calculated based on the publications in your profile and how other researchers interact with your content on ResearchGate.

Please note: We are currently working on enriching publications with more data. You may notice a few changes to your RG Score as a result.

[Learn more](#)

OVERVIEW

CONTRIBUTIONS

INFO

STATS

RG SCORE

Publication downloads

2,050

Last week: 29

Publication views

3,721

Last week: 61

Citations

318

Last month: 1

Profile views

1,262

Last week: 19

Publication downloads

daily / **weekly**



Patrick A Griffith | 22.56 • 131.4

Morehouse School of Medicine

Downloaded: **Common genetic variants influence human...**

Follow

- United States 15
- China 7
- United Kingdom 6
- India 1

OVERVIEW

CONTRIBUTIONS

INFO

STATS

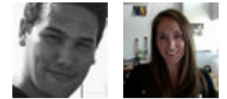
RG SCORE

SKILLS AND EXPERTISE (23)

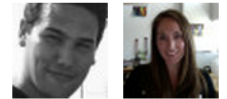
4 Neurogenetics



2 Genetics



2 Neuroscience



1 Neurobiology and Brain Physiology

1 Medical Neurosciences

1 Genetic Analysis

1 Neuroimaging

1 Brain Imaging

1 Human Genetics

1 Functional Neuroimaging

Do your peers have these skills or expertise?



Jordan W Smoller
Biological Psychiatry

Endorse



Jac Charlesworth
Human Genetics

Endorse

1 publication was recently added to your profile. [Review updates](#)



PUBLICATIONS · 34

Articles · 28

Chapters · 1

Conference Papers · 5

Datasets

Full-texts · 23

Other Research

QUESTIONS

ANSWERS · 8

FOLLOWERS · 22

CITATIONS · 318

OPEN REVIEWS

RESEARCH FEEDBACK

Chapter: Genetic Influence on the Human Brain

D. Reese McKay, Anderson M. Winkler, Peter Kochunov, Emma E.M. Knowles, Emma Sprooten, Peter T. Fox, John Blangero, David C. Glahn

[\[Show abstract\]](#)

Genome Mapping and Genomics in Human and Non-Human Primates, 1 edited by Ravindranath Duggirala, Laura Almasy, Sarah Williams-Blangero, Solomon F.D. Paul, Chittaranjan Kole, 03/2015: chapter 13: pages 247-258; Springer Berlin Heidelberg., ISBN: 978-3-662-46305-5

Add full-text

Add resources

Remove

Article: Common genetic variants influence human subcortical brain structures

Derrek P. Hibar, Jason L. Stein, Miguel E. Renteria, Alejandro Arias-Vasquez, Sylvane Desrivieres, Neda Jahanshad, Roberto Toro, Katharina Wittfeld, Lucija Abramovic, Micael Andersson, [...], The CHARGE Consortium, EPIGEN, IMAGEN, SYS, Nicholas G. Martin, Margaret J. Wright, Gunter Schumann,

LETTER



Co-authorship Details

TOP CO-AUTHORS



David C Glahn

|| 45.74 · || 1297.45 · (23)

Yale University



John Blangero

|| 50.36 · || 2828.82 · (19)

University of Texas Health Science ...



Emma E M Knowles

|| 27.14 · || 133.51 · (17)

Yale University



Emma Sprooten

|| 34.87 · || 355.51 · (17)

Icahn School of Medicine at Mount ...



Joanne E Curran

|| 41.35 · || 757.48 · (12)

Texas Biomedical Research Institute

Q&A

Publications

Jobs

Q&A

Get answers to your research questions and share your expertise.



Enter your question

150

Ask

QUESTIONS WE THINK YOU CAN ANSWER



Cristiel Ba asked a question:

×

Why such a huge difference between different VBM8 methods and which one should be selected?

Hi everybody! I have been using VBM8 in SPM12 for a few months now for volumetric analysis of the human Hippocampus, between two different groups. I'm completely aware that depending of the [more]

1 answer added

Follow

Answer



QUESTIONS WE THINK YOU CAN ANSWER

RECENT QUESTIONS IN YOUR FIELD

QUESTIONS YOU FOLLOW

QUESTIONS YOU ASKED



Find a topic

Q&A

Publications

Jobs



Get personalized job suggestions

*We recommend jobs based on the information in your profile.
Complete your profile to get the best suggestions.*

Complete your profile



Associate Director - Genetically Defined Di...
Bristol-Myers Squibb
Wallingford CT, United States



Resident Doctor - Neurology
Paracelsus Medical University Salzburg
Salzburg, Austria

Social Norms



Followers



Anderson Winkler | 36.59 · 377.16
University of Oxford



David C Glahn | 45.74 · 1297.45
Yale University



Mark Ware | 13.77 · 49.45



Henriette Raventós | 33.52 · 207.82
University of Costa Rica



Gang Li | 31.96 · 172.72
University of North Carolina at Chapel Hill



Angela R Laird | 41.78 · 665.34
Florida International University

Following



Hugo Cornelis | 26.70 · 78.23



Anderson Winkler | 36.59 · 377.16
University of Oxford



David C Glahn | 45.74 · 1297.45
Yale University



Mark Ware | 13.77 · 49.45









Joanne E Curran | 41.35 · 757.48
Texas Biomedical Research Institute



Gang Li | 31.96 · 172.72
University of North Carolina at Chapel Hill

Email Alerts

- ★ Academia.edu 11:14 AM
 **Someone just searched for you on Google...**
Hi David Reese, Someone just searched for you on Google and found your page on Academia.edu. To see what city the search came from, follow the link below: [View City Thanks](#), [The Academia.edu Team Want to share your...](#)
- ★ ResearchGate 10:29 AM
 **David, 3 of your department colleagues just joined ResearchGate**
David, 3 of your department colleagues just joined ResearchGate. Why not follow them? 31 researchers [View all 3 researchers from Department of Psychiatry](#) [View 28 researchers from Yale University](#) [View More researchers who...](#)
- ★ ResearchGate 10:23 AM
 **New publications from: Georg Homuth,Andy Simmons,William R Lovallo**
New research from your network [View all new research](#) Publications APRIL 2015 Georg Homuth published this article. Article: [Association between polygenic risk for schizophrenia and brain volume in the general popul... Sa...](#)
- ★ ResearchGate 3:36 AM
 **David, 2 of your publications were cited**
David, we found recent citations of your work [See your citations](#) Citations Article: [Behavioral interpretations of intrinsic connectivity networks](#). Cited in 4 publications: Article: [Aberrant functional connectivity within the basal...](#)
- ★ NYTimes.com 3:33 AM
 **Today's Headlines: Hundreds of Migrants Are Feared Dead as Ship Capsizes Off Libyan Coast**
[Service Members Are Left in Dark on Health Errors](#) | [View in Browser](#) | [Add nytdirect@nytimes.com to your address book.](#) | [Unsubscribe](#) [Most Popular](#) | [Video](#) | [Today's Headlines Monday, April 20, 2015](#) [IN THIS EMAIL](#) [World](#) | [U.S...](#)
- ★ ResearchGate
 **Mar Matarin published new research**
- ✓ ☰ ○ ▼

Conclusions

- Many web-based programs available to help document research processes
 - Level of user interaction is need-based
 - Data sharing initiatives are slow to catch on
 - Capabilities of Scholarly Collaboration Networks outstrip traditional
- THANK YOU!**

Questions?
